



1



2



3



4



5



6



7



8



9



10



11



12



13



14



15



16



17



18

MATERIAL

Aluminium, oval cross section bar, with antibacterial epoxy resin coating, RAL 9016 white colour.

STANDARD EXECUTION

Threaded blind holes.

FEATURES AND APPLICATIONS

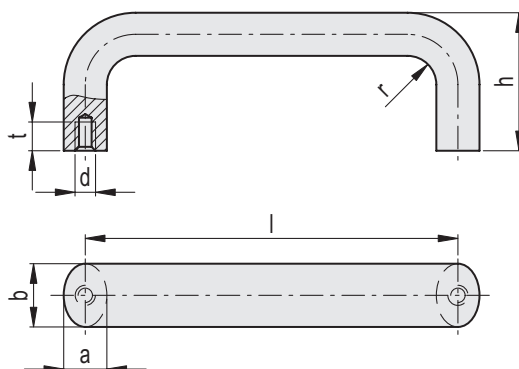
GN 565-WSA handles have a zinc molybdate-based powder coating which gives them antibacterial properties.

The principle of action, which is activated by the presence of humidity, reduces the growth of bacteria within 24 hours, down to less than 0.2% of the original number of microbes.

They are generally used in the healthcare sector, in public buildings such as airports, railway stations, stadiums, etc.

SPECIAL EXECUTIONS ON REQUEST

Lengths and colours other than the standard executions.



Code	Description	b	d	l±0.25	a	h	r	tmin	⚖
GN.27332	GN 565-20-100-WSA	20	M6	100	13	49	13	10	87
GN.27335	GN 565-20-112-WSA	20	M6	112	13	49	13	10	97
GN.27342	GN 565-20-128-WSA	20	M6	128	13	51	13	10	107
GN.27344	GN 565-20-160-WSA	20	M6	160	13	51	13	10	127
GN.27360	GN 565-26-128-WSA	26	M8	128	17	55	17	12	183
GN.27362	GN 565-26-160-WSA	26	M8	160	17	57	17	12	211
GN.27366	GN 565-26-192-WSA	26	M8	192	17	57	17	12	245
GN.27368	GN 565-26-300-WSA	26	M8	300	17	57	17	12	350